

The Ark ...after the deluge

God gave Noah precise instructions on how he should build the ark. It had to be 136 metres long, 24 metres wide and 16 metres high. He prescribed that it be made of resinous wood, have three stories, a roof, a door and a window. It had to provide protection to Noah's family and a pair of each animal species. The ark had to ensure that humankind and the animal kingdom survived. How Noah should construct it in detail was left up to him. The analogy to relationships between client and architect is obvious. We face various challenges, however, if we take the construction of the ark a step further. The duration of its journey was uncertain; it needed correspondingly large storage spaces for food and tanks of water. The animals had to be placed in ways so that their weight and size did not destabilize the ark on water and that they were in the vicinity of other animals with which they could coexist. This meant a highly differentiated order of things, perfect spatial structuring and solid construction – in contrast to the murderous chaos reigning in the outside world. The word 'ark' derives from the Latin word for box (arca), corresponding to the Hebrew word for box (tēvāh). An ark is not a boat. One could therefore neither steer it nor use it to travel to a desired destination as it had neither rudder nor sail. It lifted off the ground as the flood rose, drifted with the currents, and was deposited on the Ararat Mountains after 150 days at sea as the floods slowly subsided. The flood stands for cleansing the earth of all sins, for a new beginning and a second chance. Today, floods are viewed as crises situations and threats that confront us. The ark provides an answer to this, a reaction, and ultimately presents a piece of architecture to survive such situations. The ark protects life in its most comprehensive form. As an archetype, the ark, and Noah's ark in particular, has become ingrained in our consciousness. At the same time, it has inspired a myriad of imitators who have made their homes on different waters. Just think of the swimming school of Lagos, the Floating Farm of Rotte dam and also the Floating University in Berlin – these are all examples of floating structures that are anchored on the shores and banks of waterways.

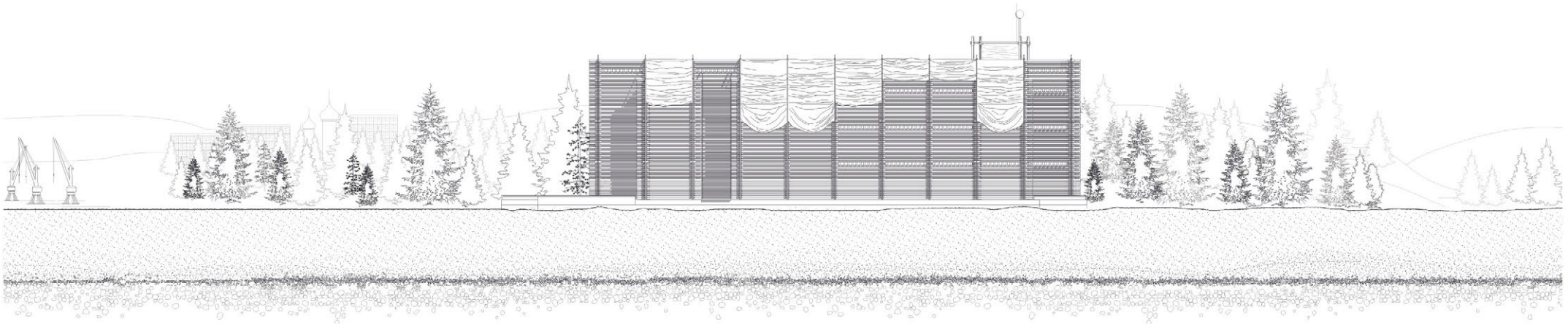
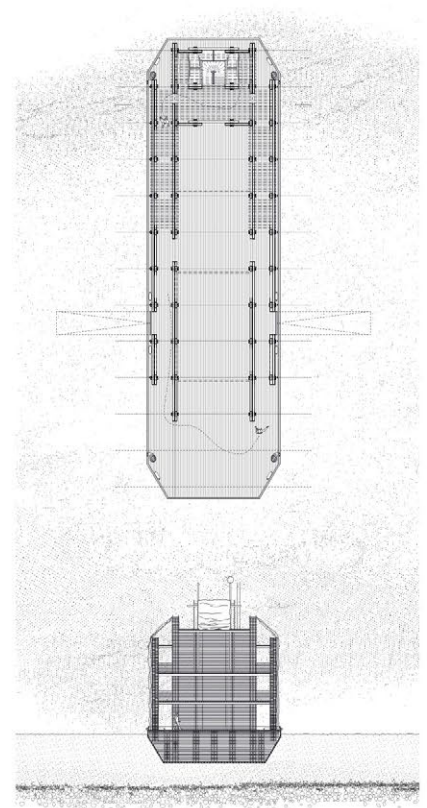
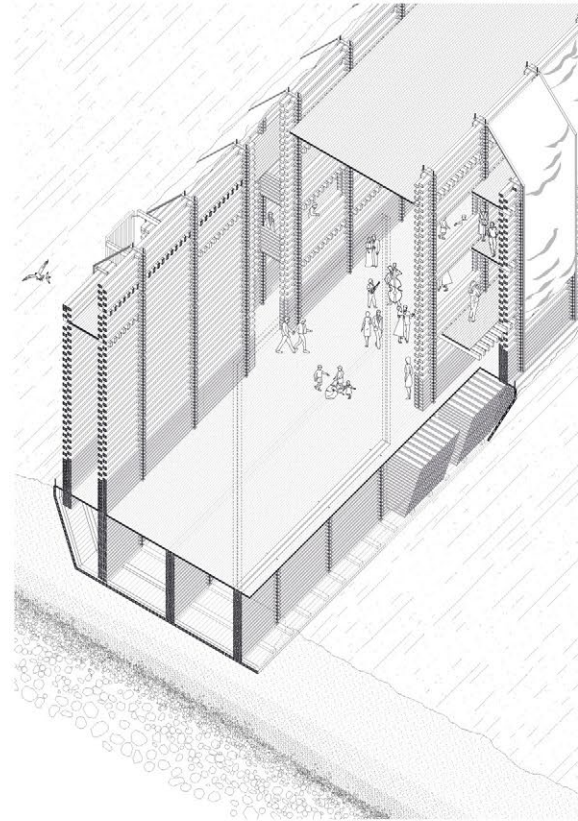


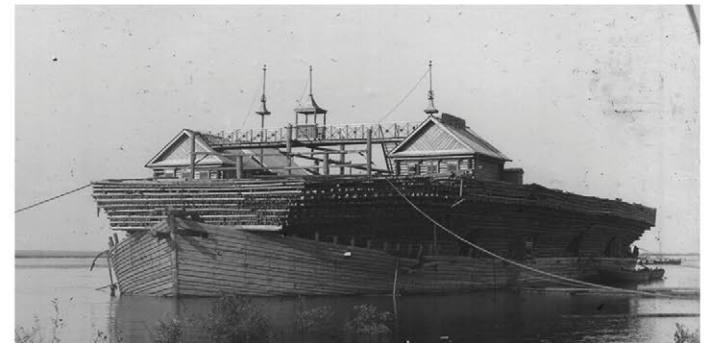
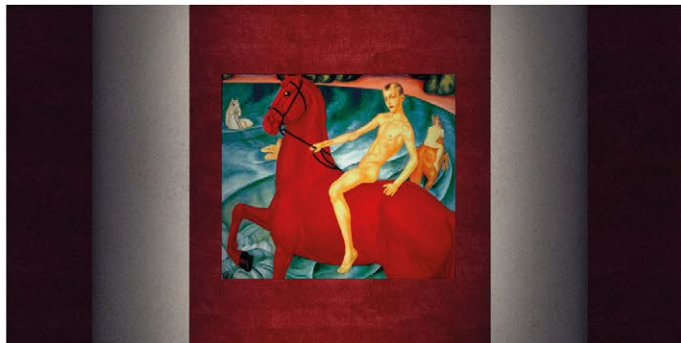
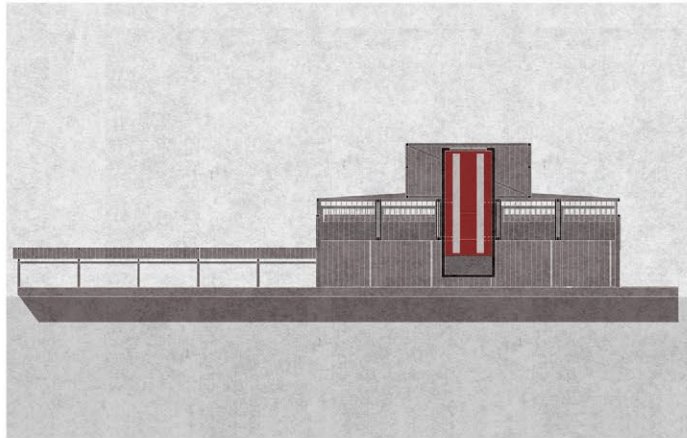
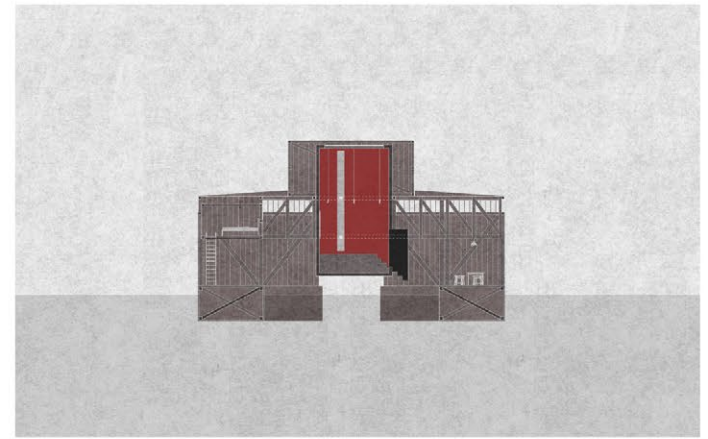
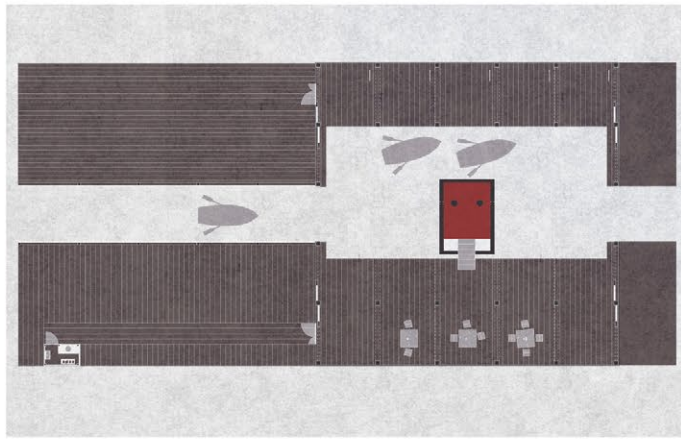
Arca, Paesaggi del diluvio, Triennale di Milano, Massimo Scolari (1986)

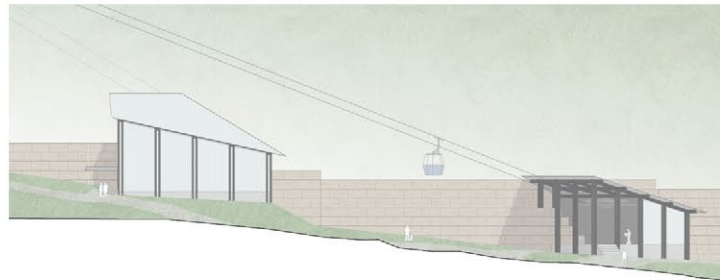
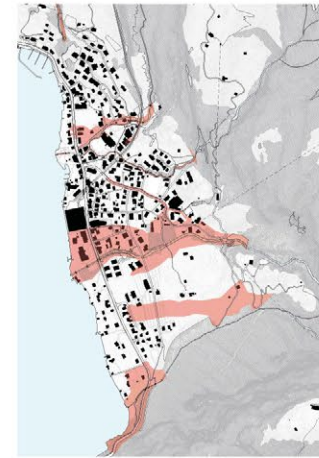
Module Leader: Felix Wettstein

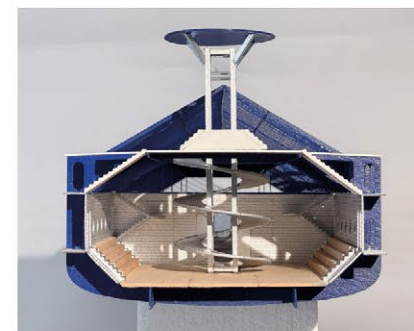
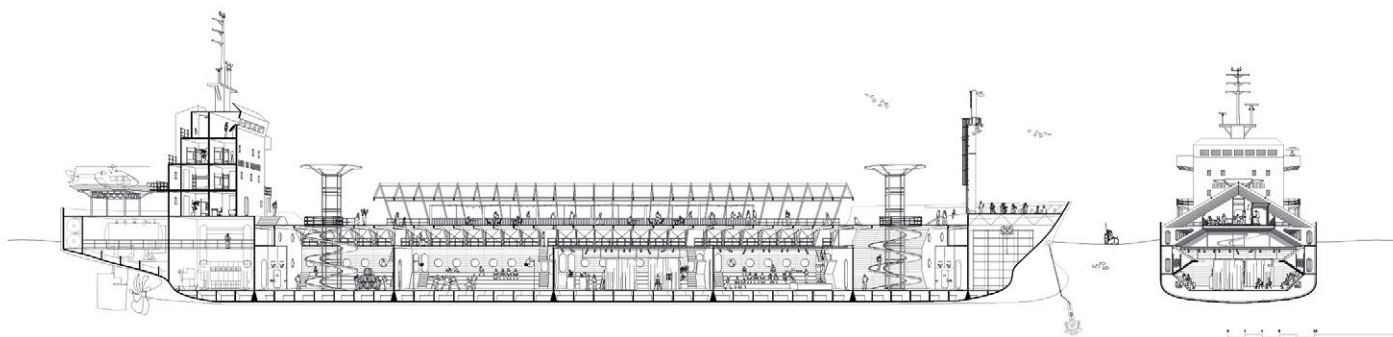
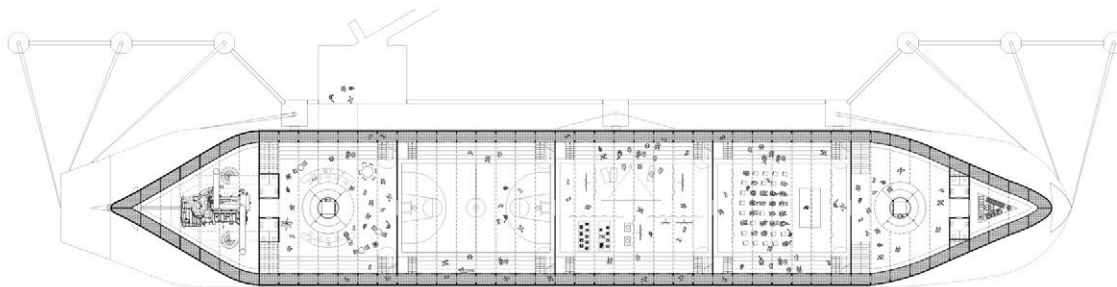
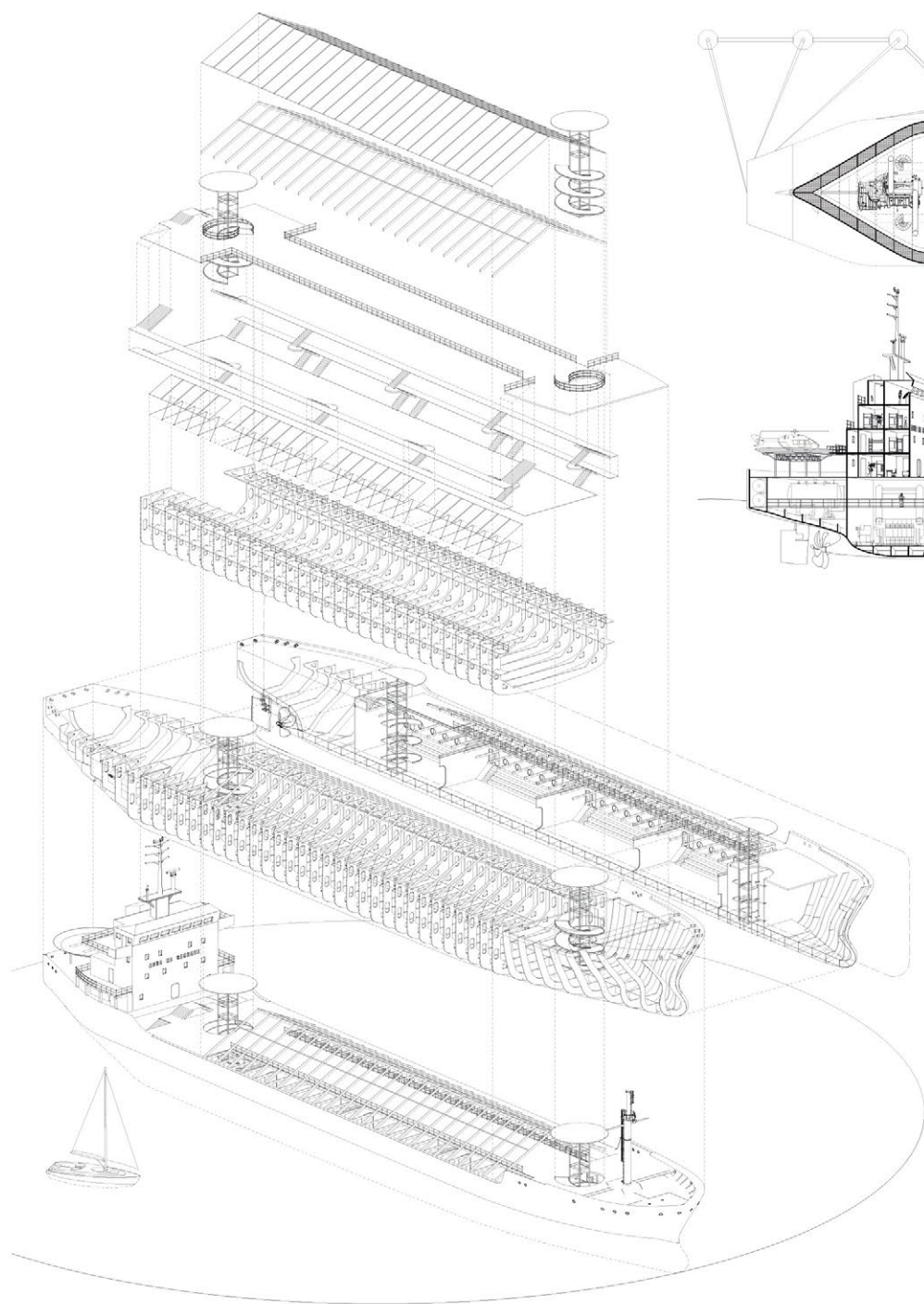
Lecturers: Felix Wettstein, Ludovica Molo, Thomas Kohlhammer

Assistant: Qendrim Gashi

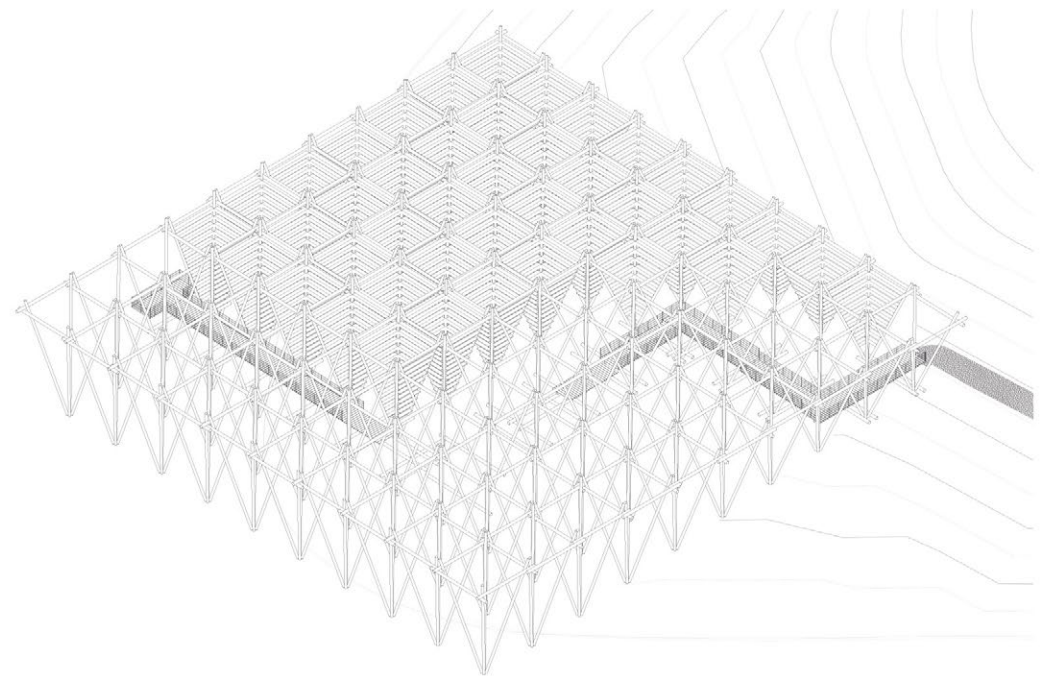
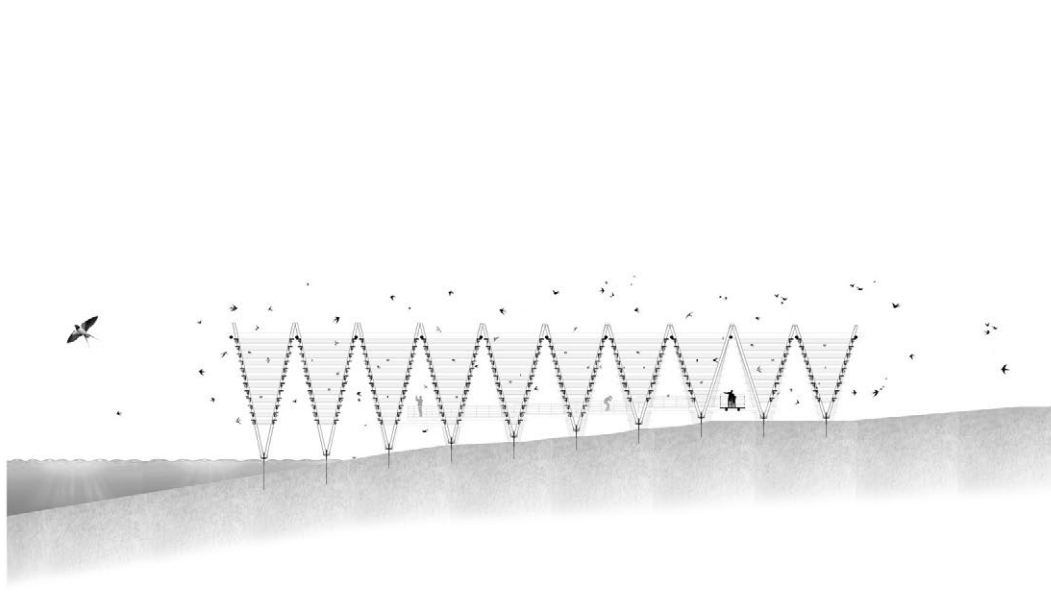
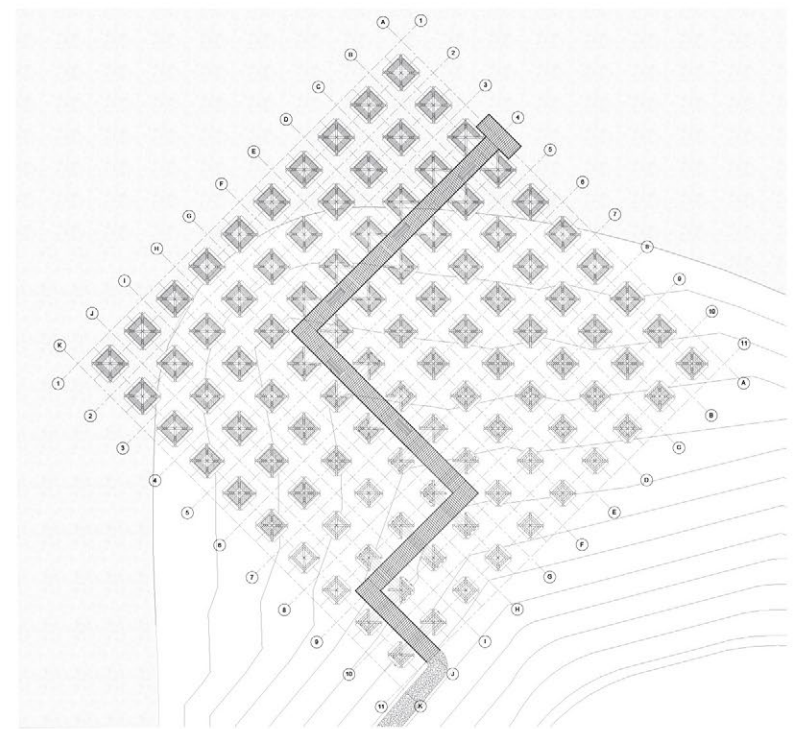
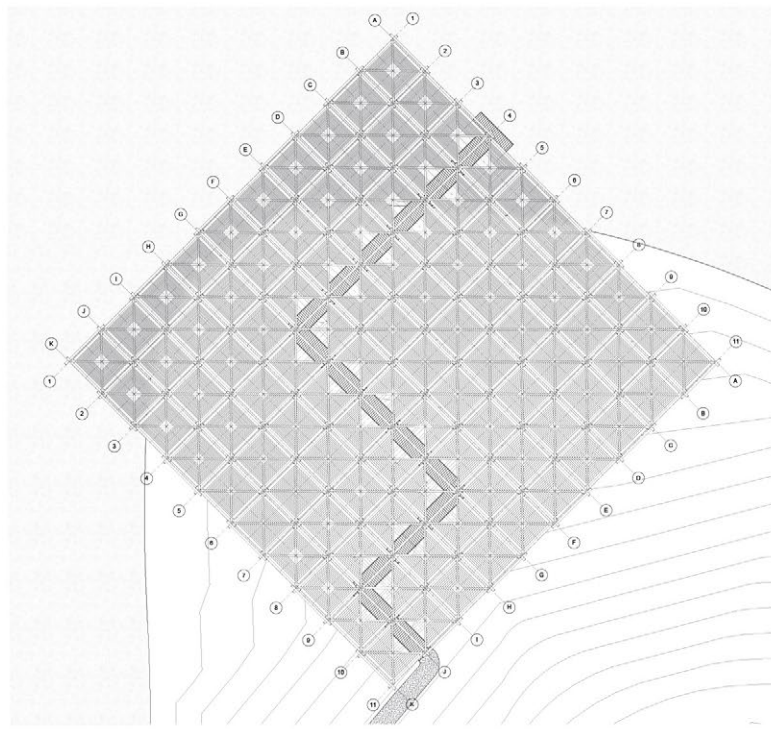
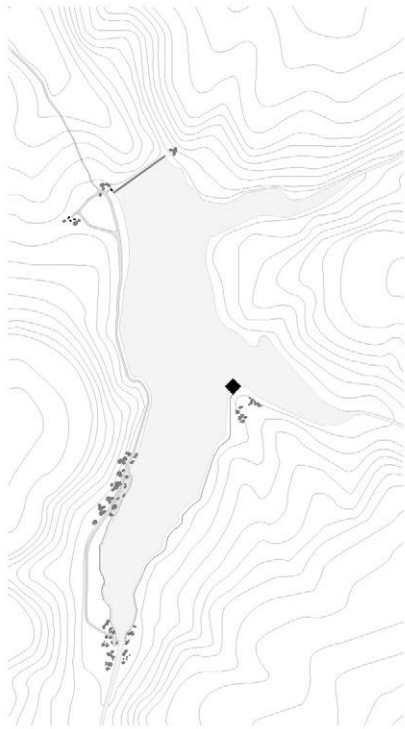


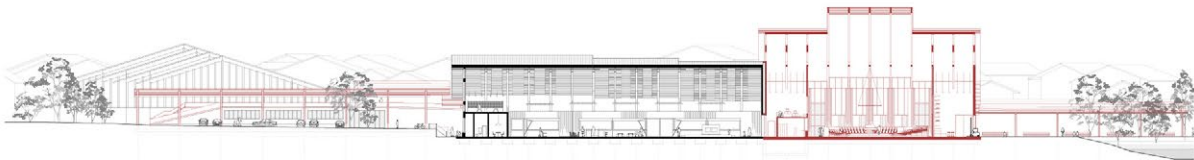
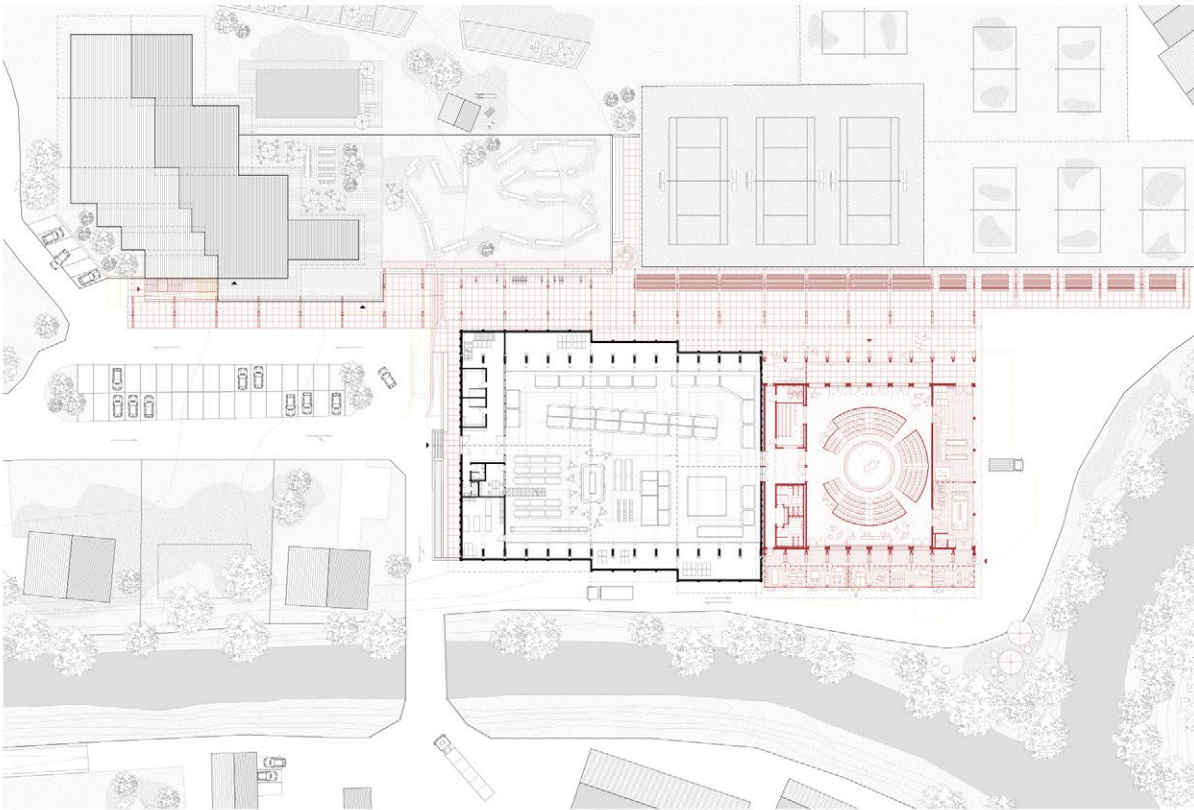


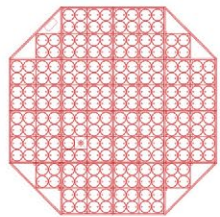
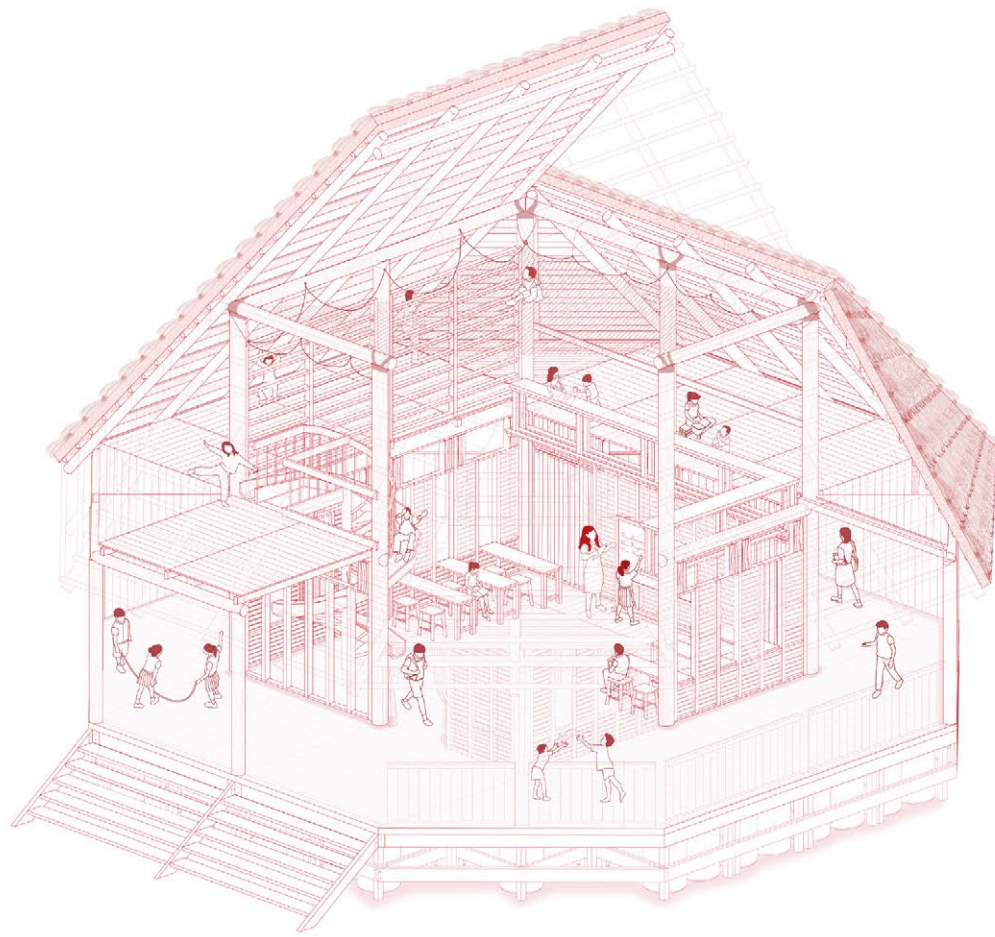




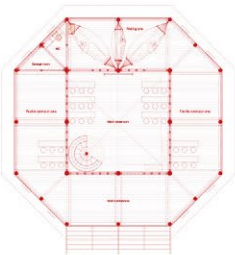
Fabian Figueiredo dos Santos



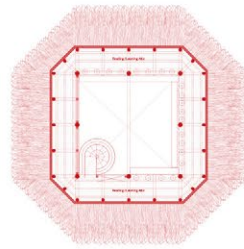




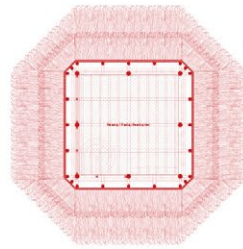
Floating Platform



Main Floor



Attic



Suspended Net

