

Veranstaltungen
Line and circle to point
 Thursday, April 4 2020

Excursion to Genoa
 16th and 17th of March

Modulverantwortung: Ludovico Moro, Felix Wettstein
Lehrteam: Ludovico Moro, Felix Wettstein, Thomas Kohlhammer
Assistent: Joana Morino

Line and circle to point
The gossamer of Campi, Genoa

After working on the oldest district in the city last semester, we now are moving towards the urban periphery. In the lower Vig Polcevera, in the western part of Genoa, affected by the tragedy of the fall of the Morandi bridge, we find ourselves in a loosely woven web of infrastructure, industrial heritage, workers' districts and old courtyard-villas. The gossamer of Campi is the point of departure and focus of our design work. We will be seeking to imbue this monument of industrial history with new meaning and establish a connection between it and the new bridge designed by Renzo Piano and the new plan for the park of Polcevera, by Stefano Boeri. Correspondingly, the task must be tackled on two levels: one focuses on the object and the other on urban planning. A neighbourhood overshadowed by its dramatic history is to be led into a better future.

How can the gossamer be tasked, a monument of Genoa's industrial history? In what way does my project contribute to enriching the existing urban structure?

We are deliberately not providing an exact spatial programme. This is to be developed individually, based on analysis and the chosen urban development strategy.

Formal analysis in "Point and line to plane", written by Wassily Kandinsky and published in 1926

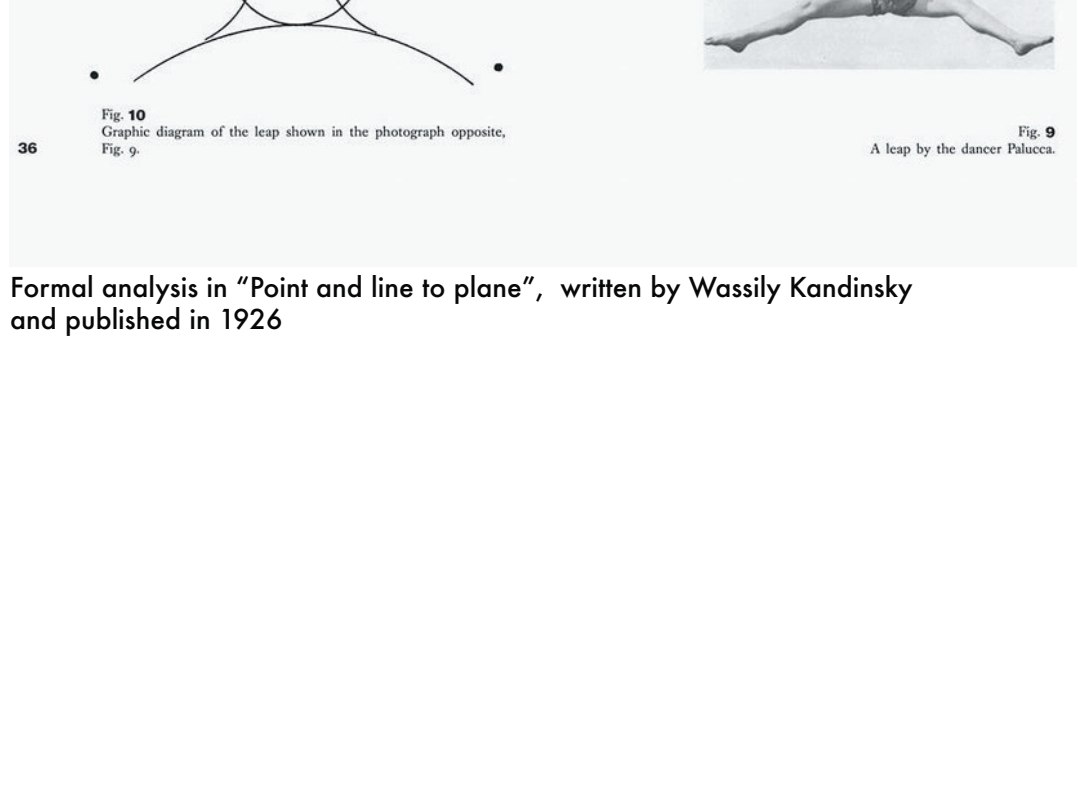
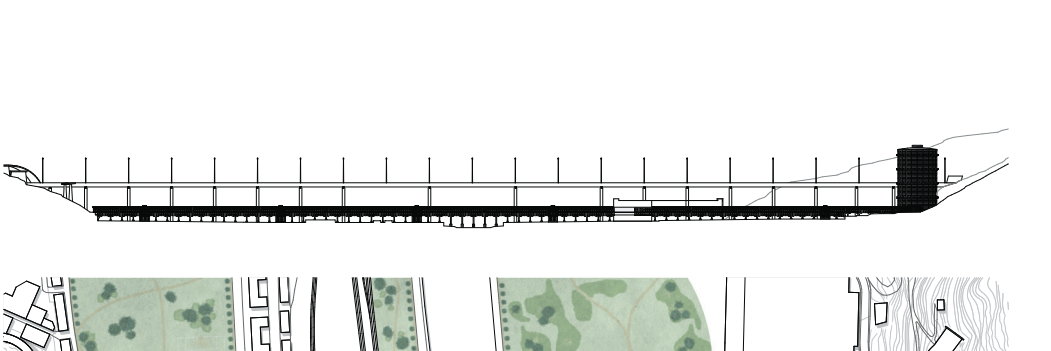


Fig. 10
 Circular diagram of the loop shown in the photograph opposite.

Fig. 9
 A loop by the artist Piet Mondrian.



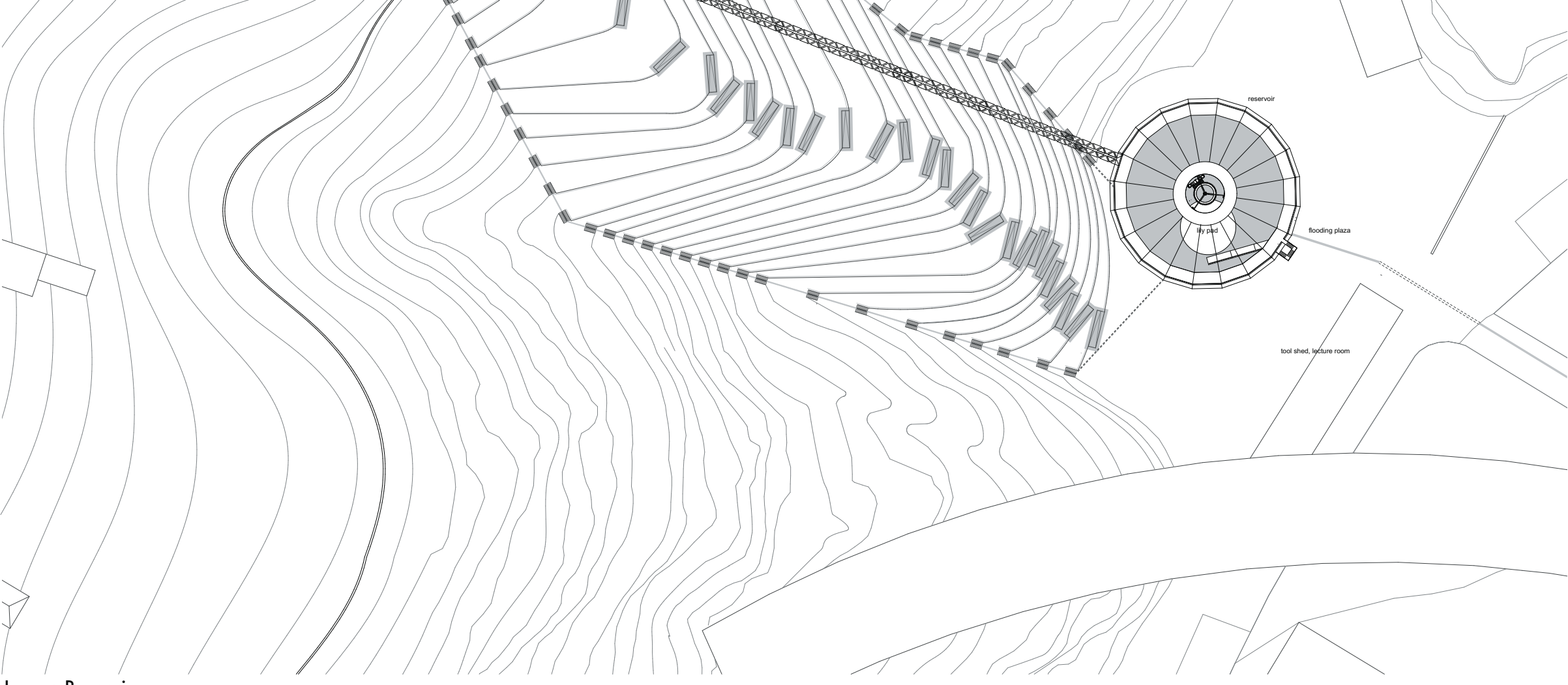
Aerial view of the area surrounding the San Giorgio Bridge



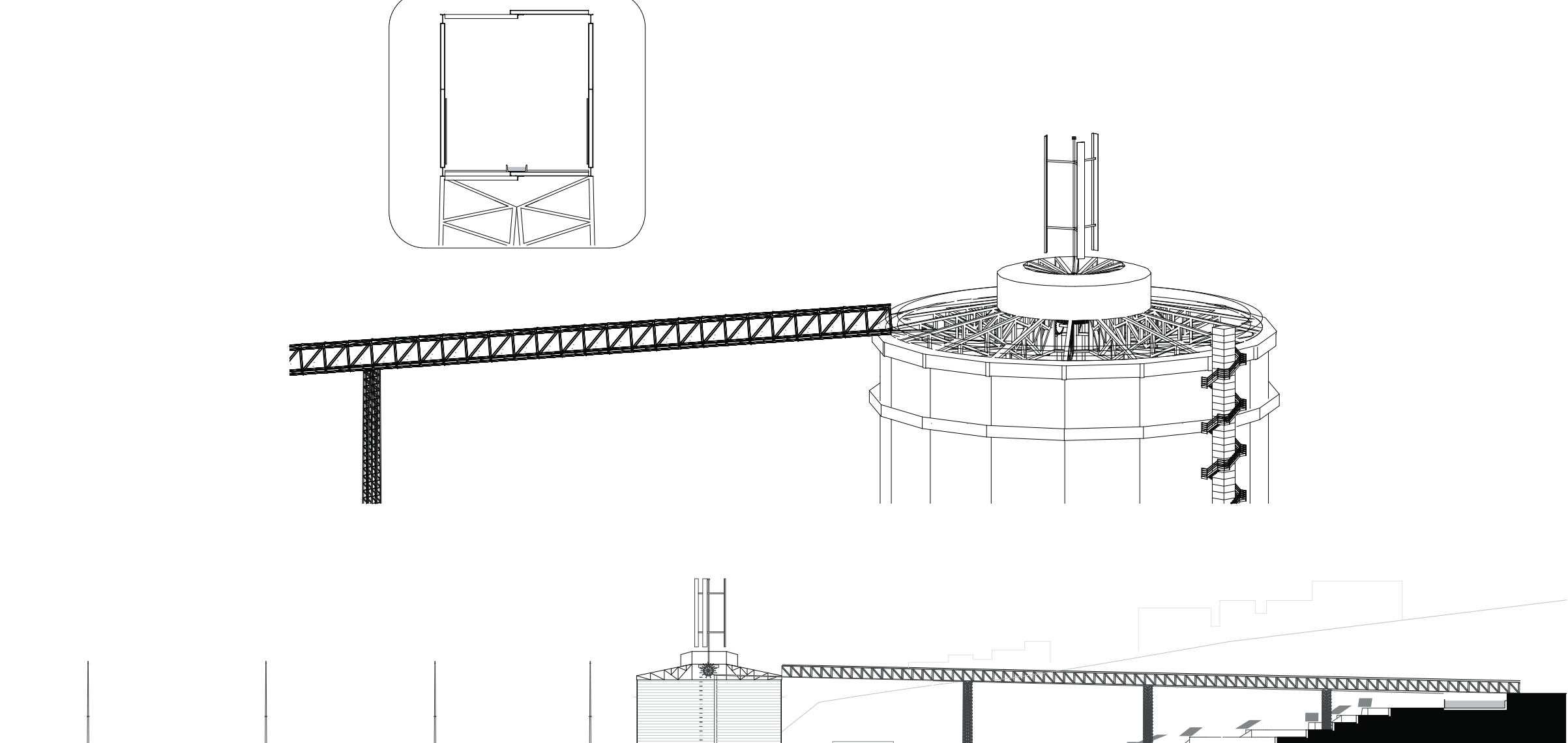
Dugald Gardner



Dugald Gardner



Jacopo Ruggeri



Jacopo Ruggeri



Kristian Aalerud



Kristian Aalerud

