

Master Project Work Architecture & Structure FS 19
TAMAA_FKP_STE1901
The Vertical City

Model: László Lovász, Miki, Felix Wittmann
Team: Thomas Kohlhammer
Assistant: Anthony Frank

Events
Project Work:
- *The Vertical City*
- *Die vertikale Stadt*
According to further information: *Workshops and Thursday Morning 9 am Studio and F-Niche*

Focus Lectures
Monday: April 15th, 9:15 am Monday: May 6th, 9:15 am Teaching room C033

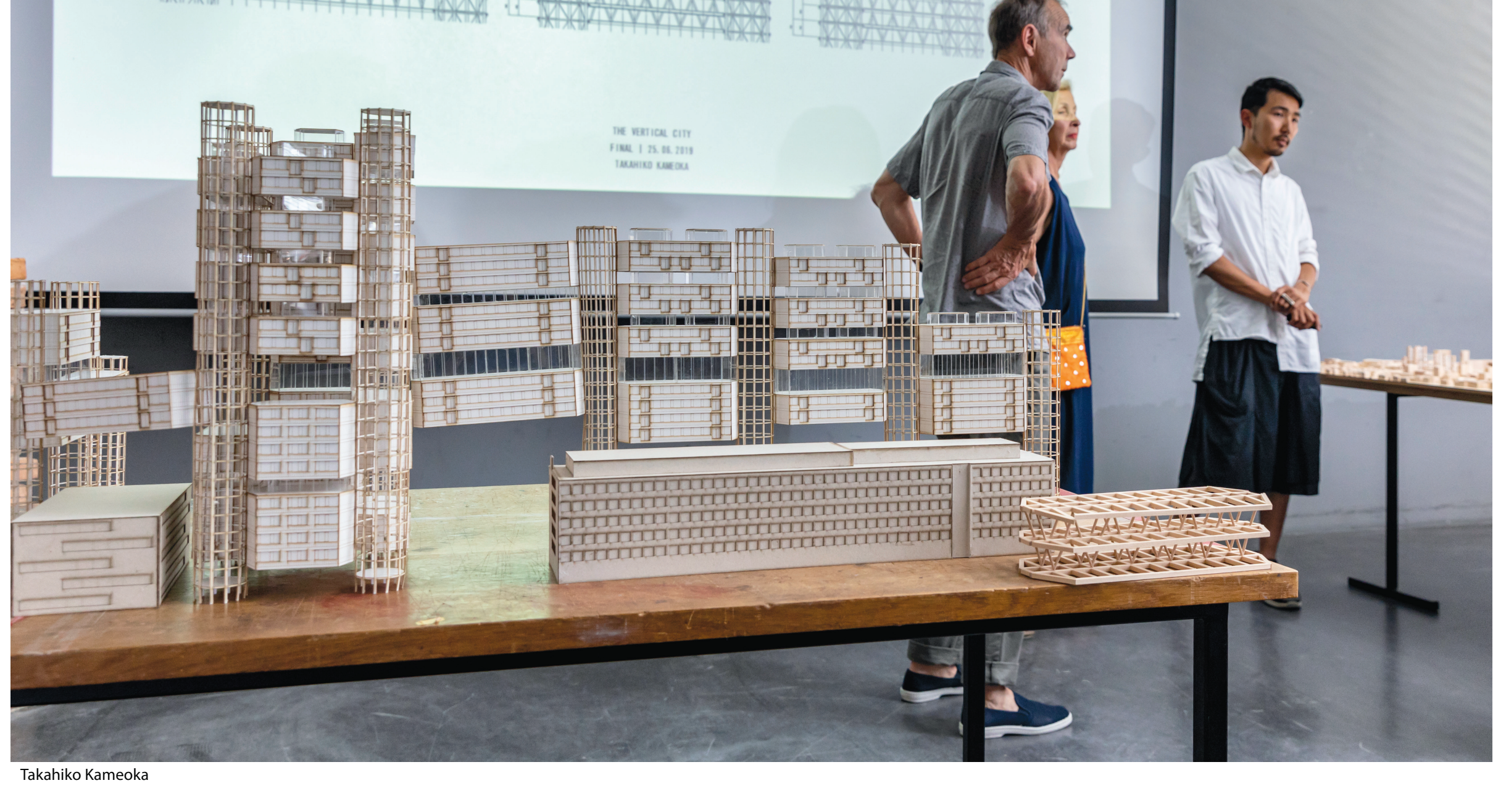
Study Trip to Great Britain
Focus: Structure in cooperation with the *In-Depth Model* to organize a Study Trip to London-Manchester. The theme includes: *Postmodernism and New Brutalism*.

"From the Tower of Babel onward, the fantasies of builders have been vertical rather than horizontal."
- Ada Louise Huxtable

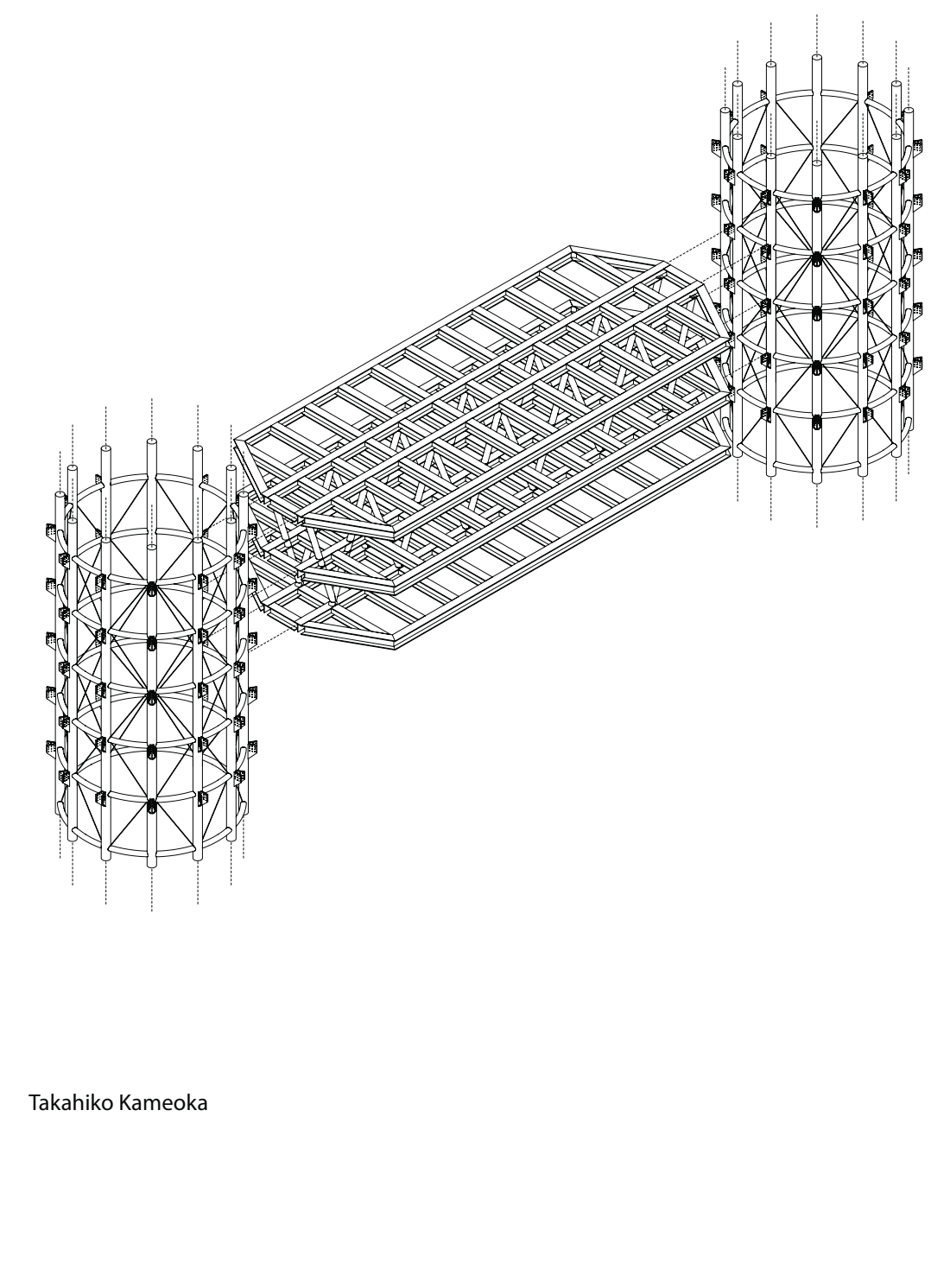
Structure - transfer
Under the title structure, transfer, we explore questions concerning relevant problems of civil society and highlight the students' awareness of and responsibility to our environment.

Infrastructure as a solution, not just another aesthetic
In the Structure focus, we will develop scenarios for the vertical city accordingly and realize them in a concrete high-rise project. We will design special structures that make it possible to stack, live and even play up different axes. The structure of access will play a crucial role here as well as the bearing structure and the infrastructure.

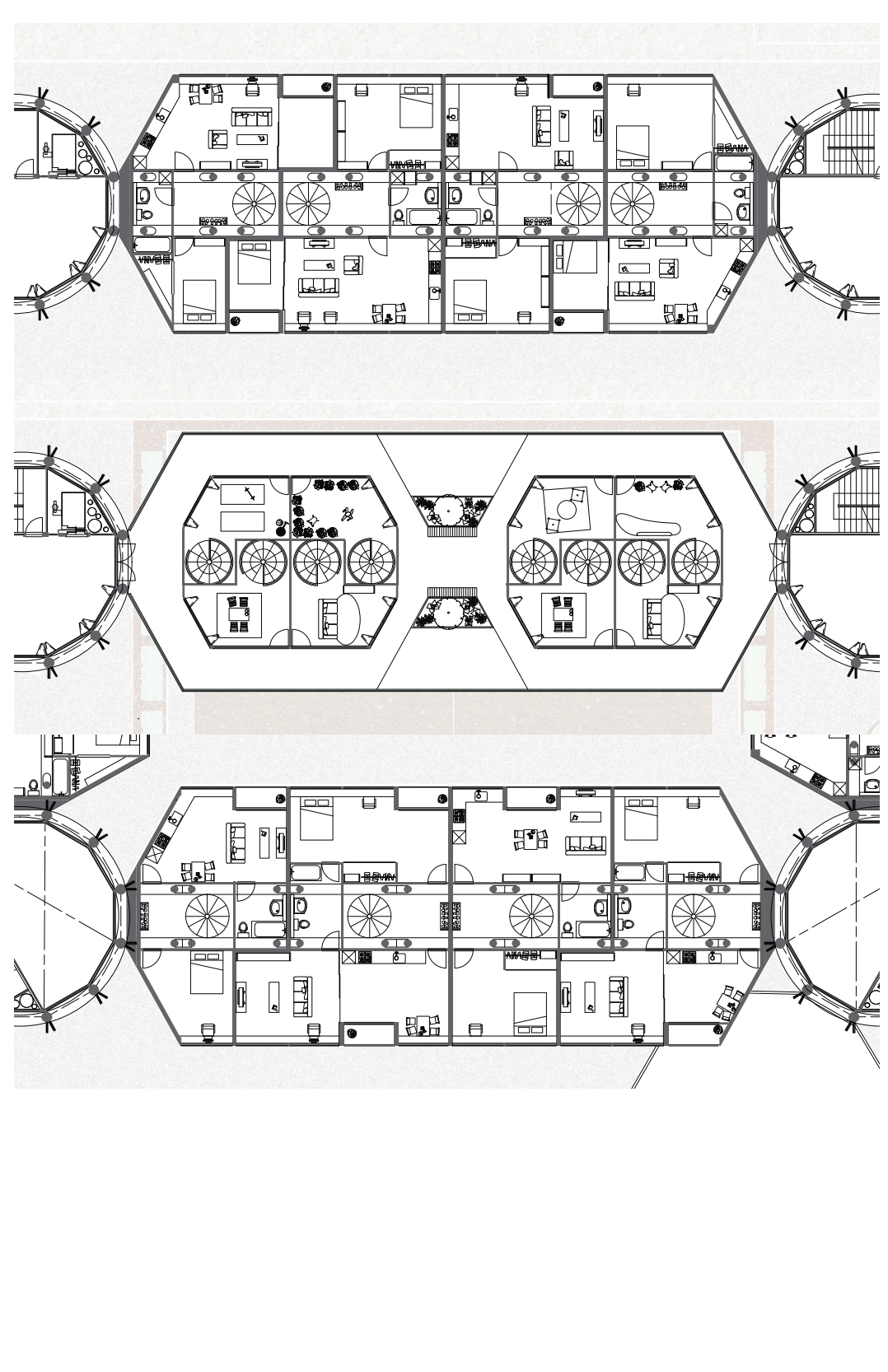
Three building sites are available for selection: they are all located in Area 1 of the high-rise guidelines of the City of Zurich. Building heights are in principle not restricted in this area. The building sites relate to the bridges crossing over the track area (Hard Bridge, Dornwil Bridge and Europa Bridge). High-rises in these locations have the potential as bridgeheads to greatly influence the look of the city. The initial situation is an urban neighborhood with a good mixture of use, where people dwell, work and live. There are such neighborhoods in Zurich and in other cities, but traditionally they are structured horizontally. We want to explore whether a mixed urban spatial programme can be developed vertically. We are not setting maximum or minimum heights. We will, however, have intense discussions about height and density. The theme is thus relevant not only to town planning and architecture but also to civil society.



Takahiko Kameoka



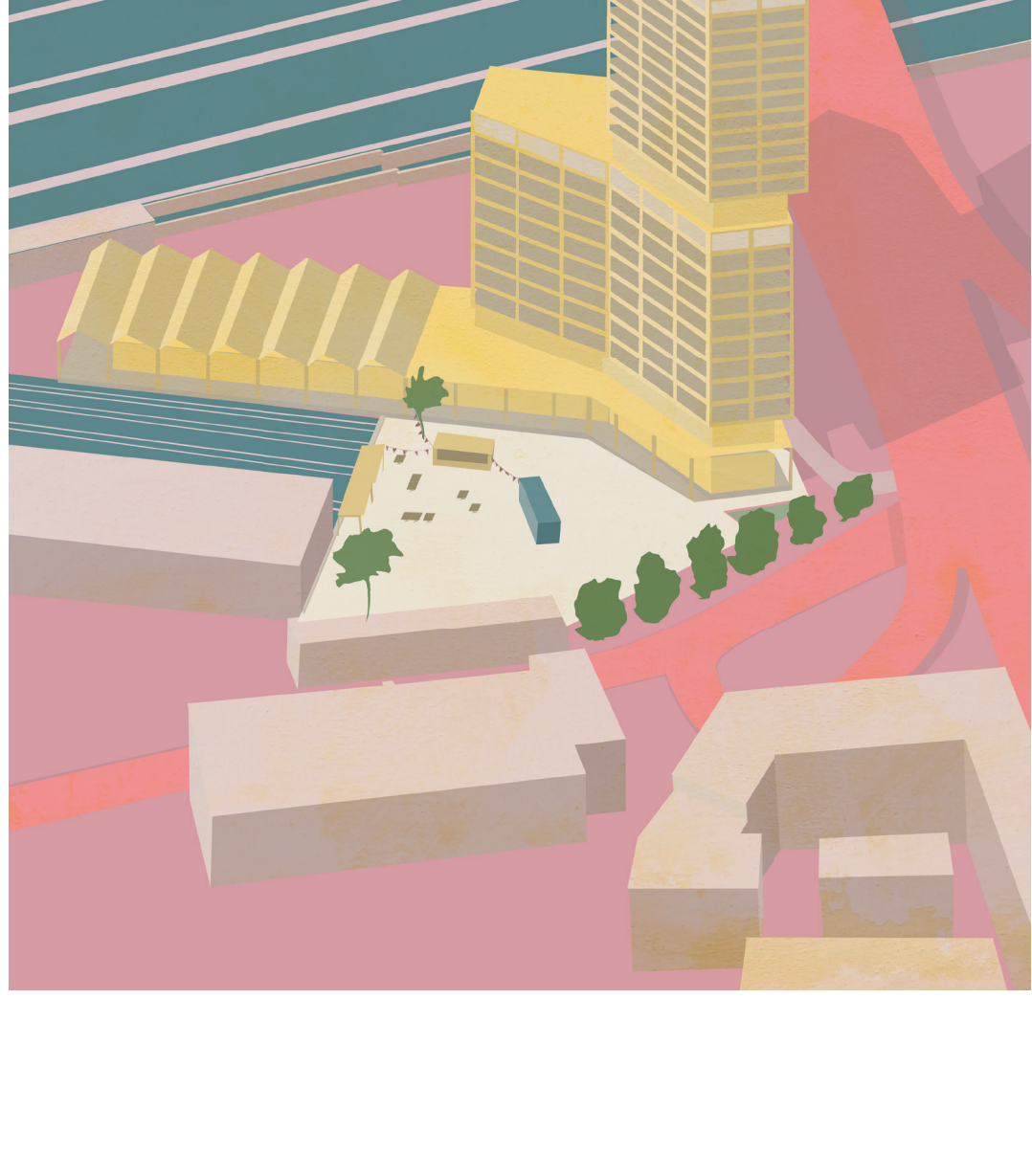
Takahiko Kameoka



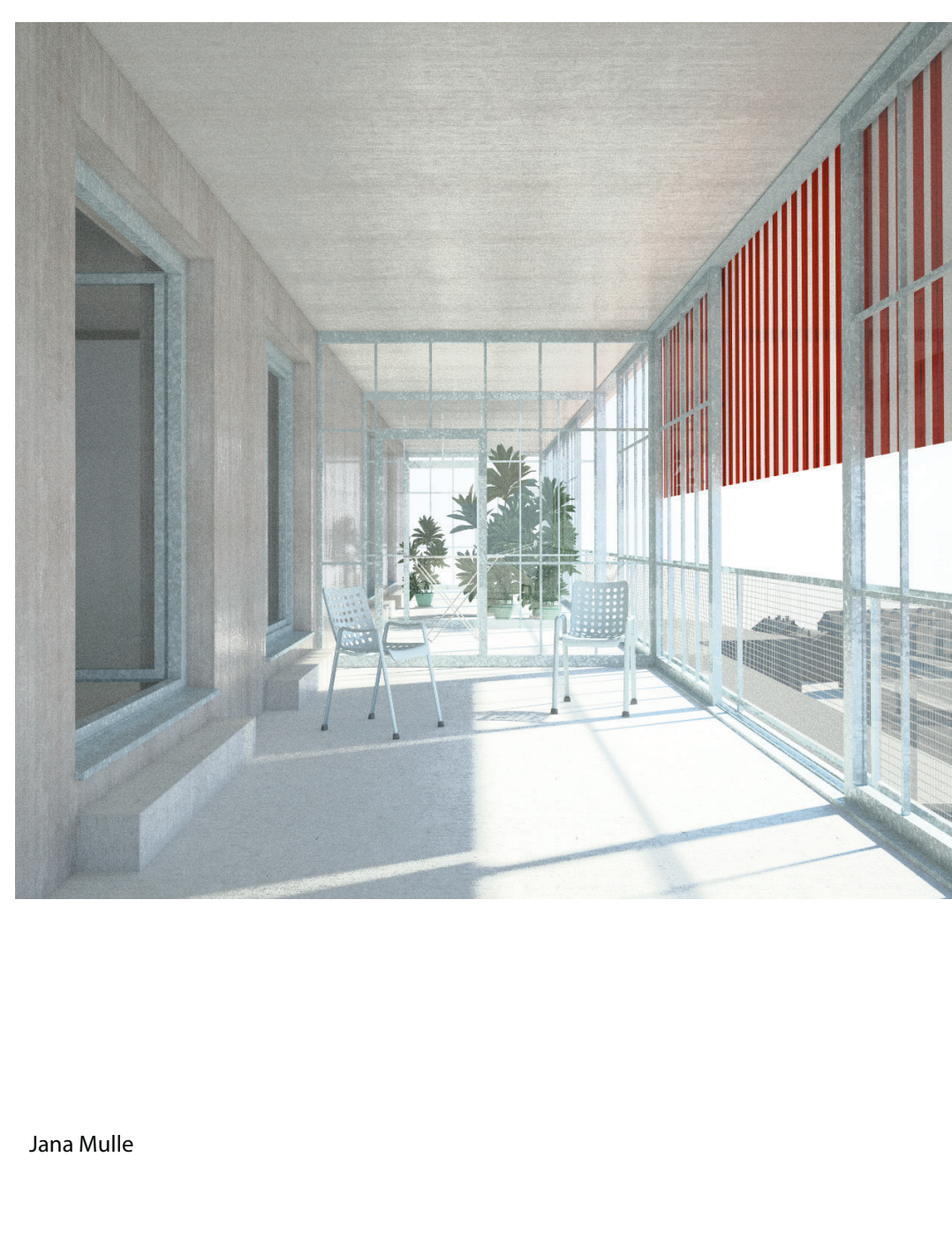
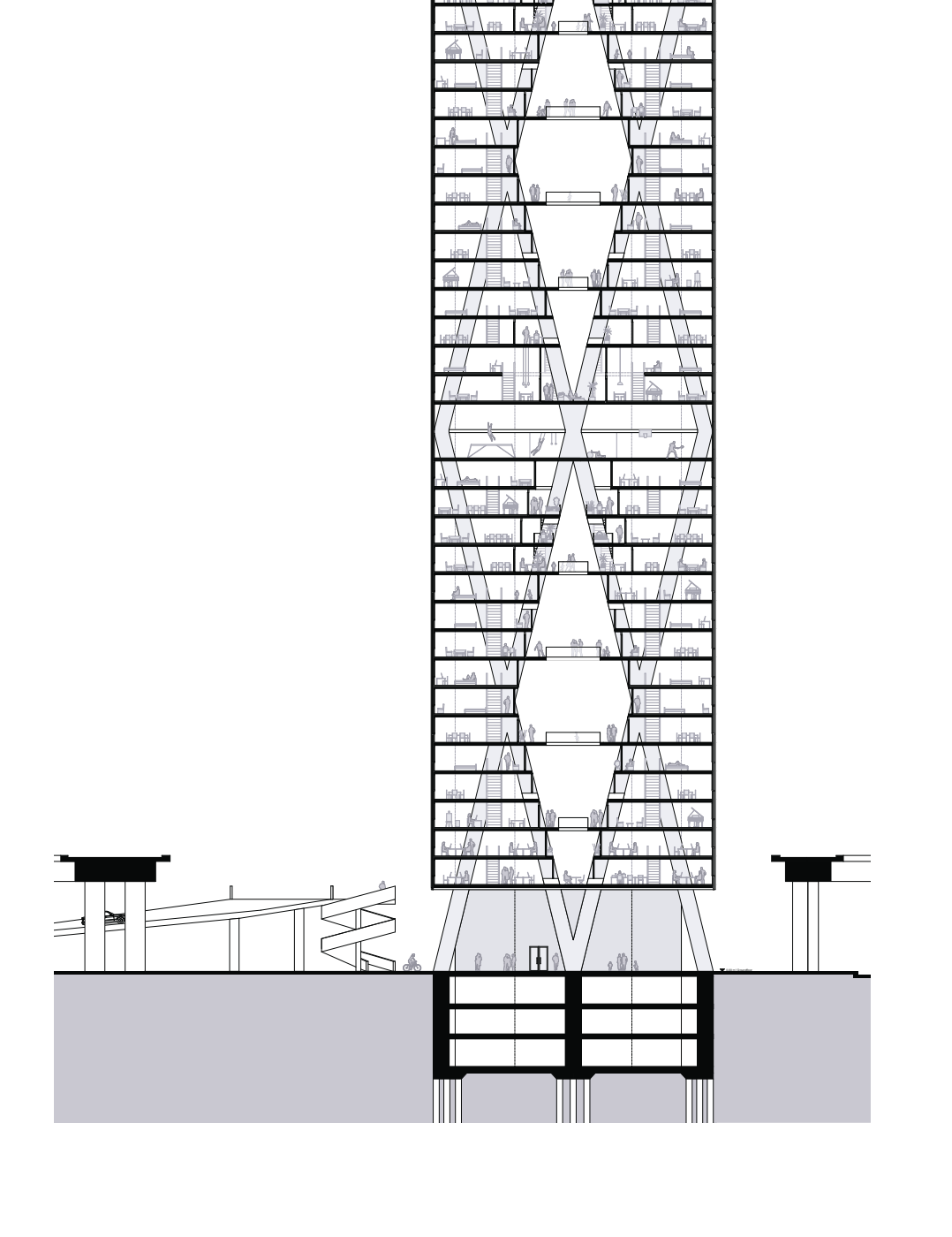
Ola Abdu



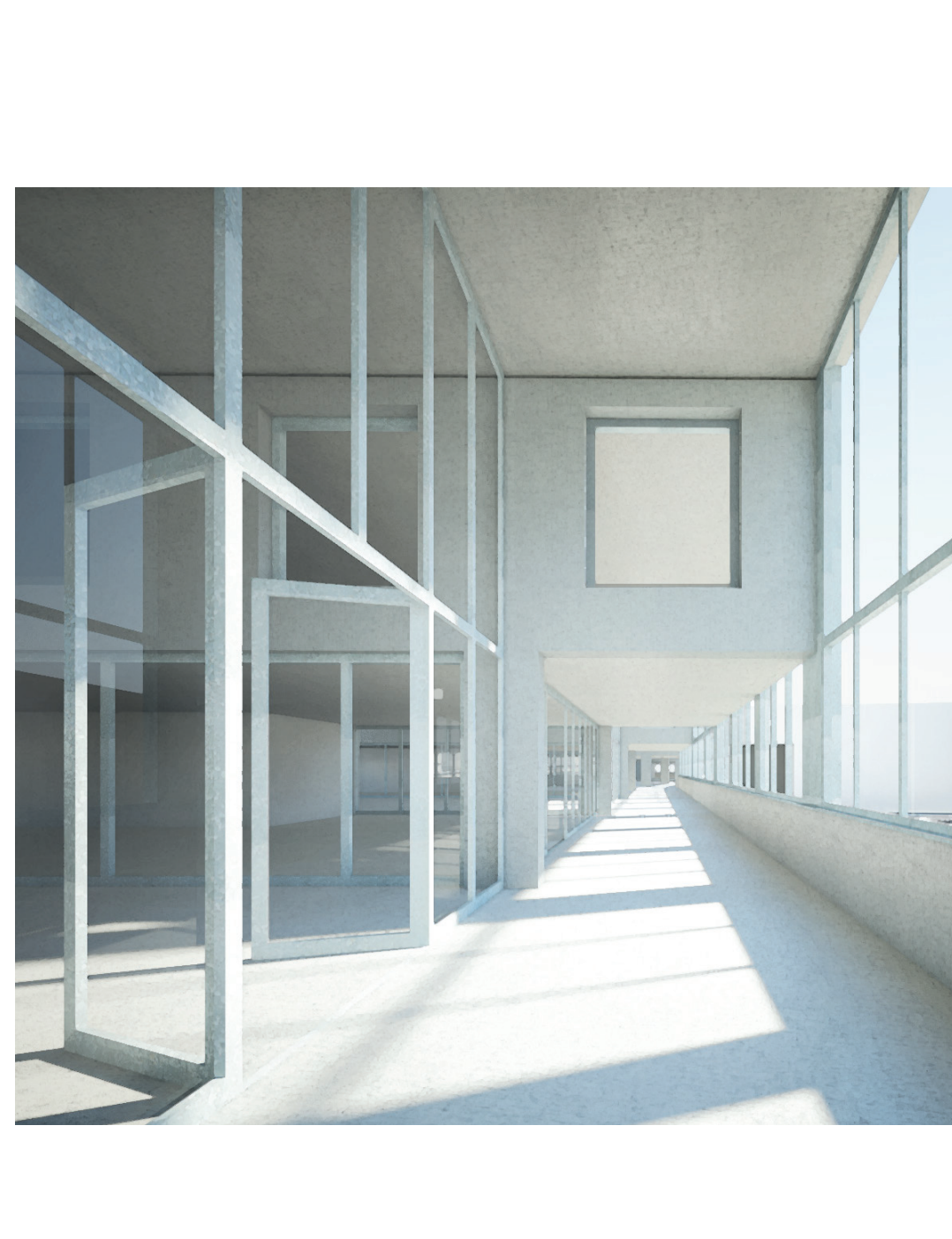
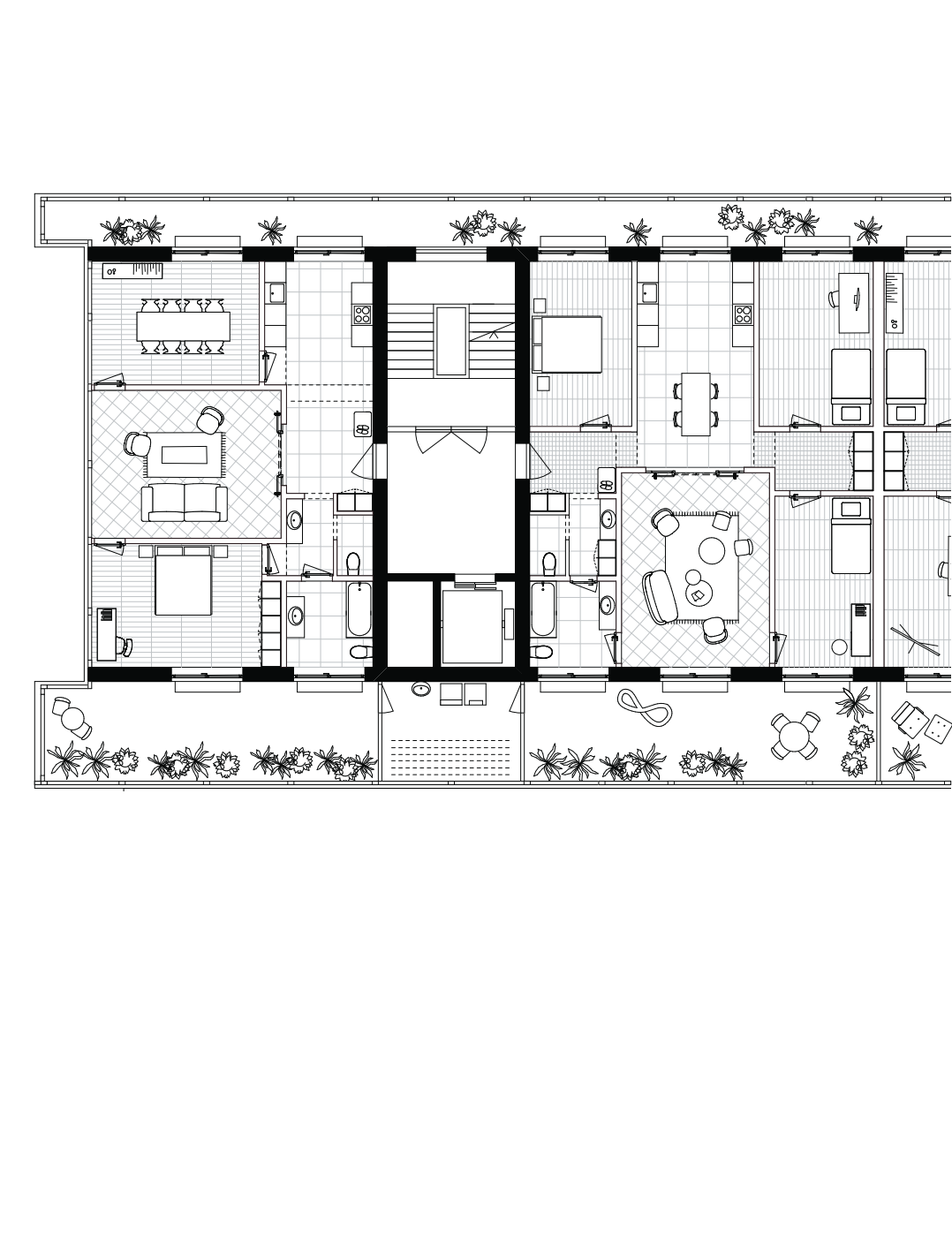
Jennifer Bader



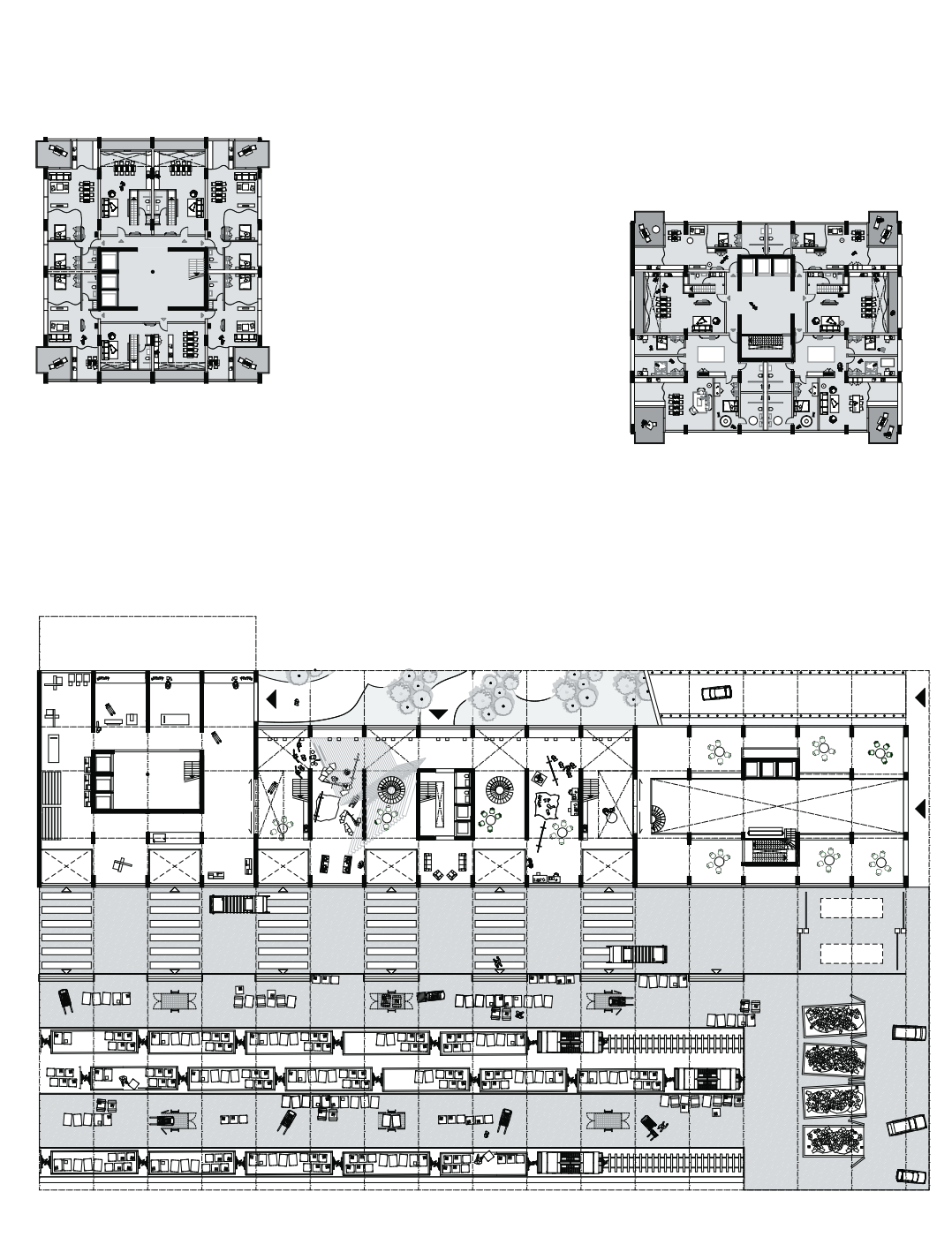
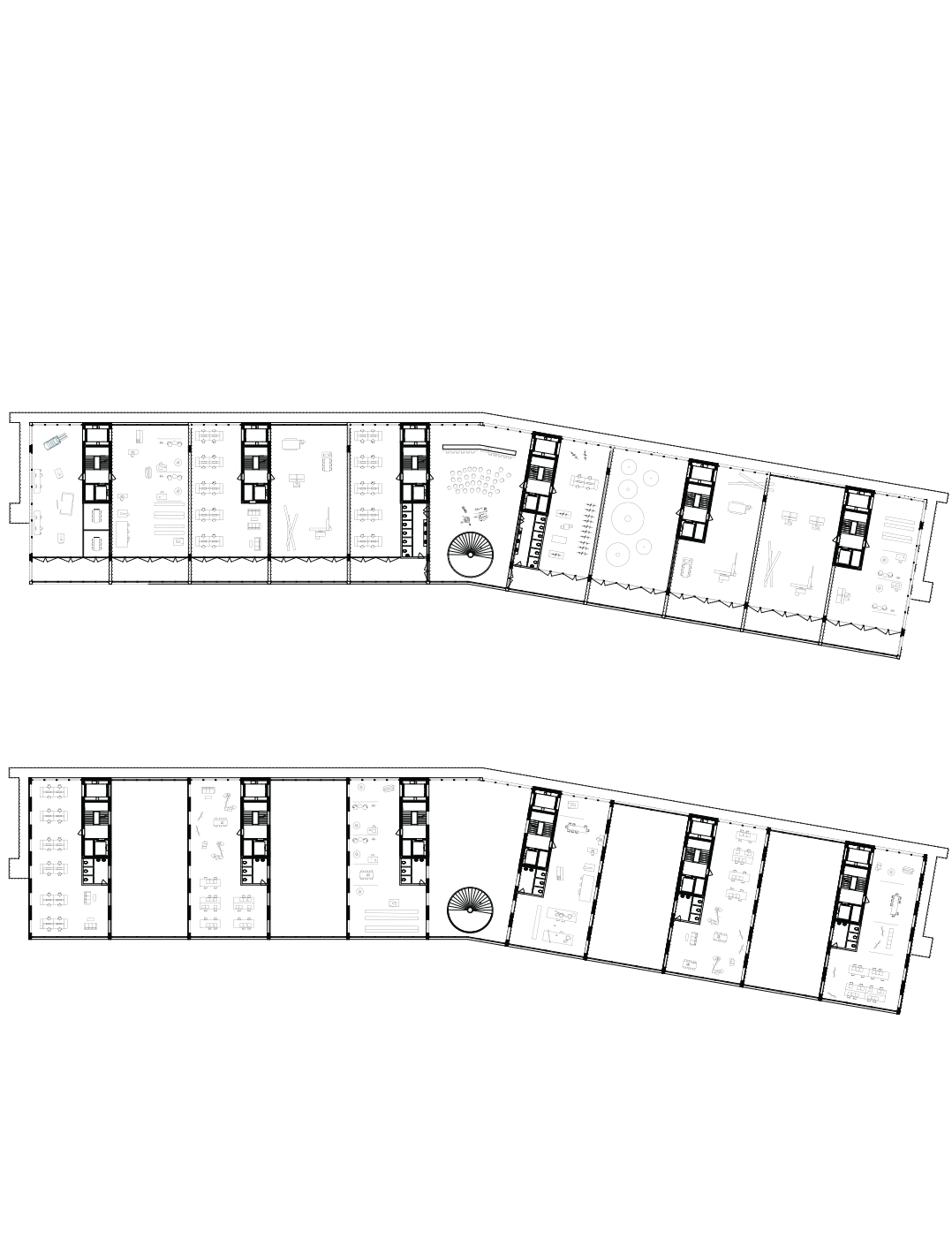
Helena Kountitzky



Jana Mülle



Jana Mülle



Predrag Bekic

